

Filter Equipment and CarbonPad Adaptation

- Learn how to identify filter equipment
- Study the various manufactures
- Gain knowledge on CarbonPad adaptations
- Starter Kit Details (Parts and Pieces)

Equipment Identification 101

Fryers/Fry Suites

- The foodservice industry is dominated by Frymaster/Dean and Pitco.
- Other majors are Henny Penny, Ultrafryer, BKI,

First you have to start with a few questions.....

Built-In or Portable Filter

First Question: What type of filter do you have?

Second question: What is the brand?

Built-in

Pan located under fryers

Pan located under the
warming station.

Portable

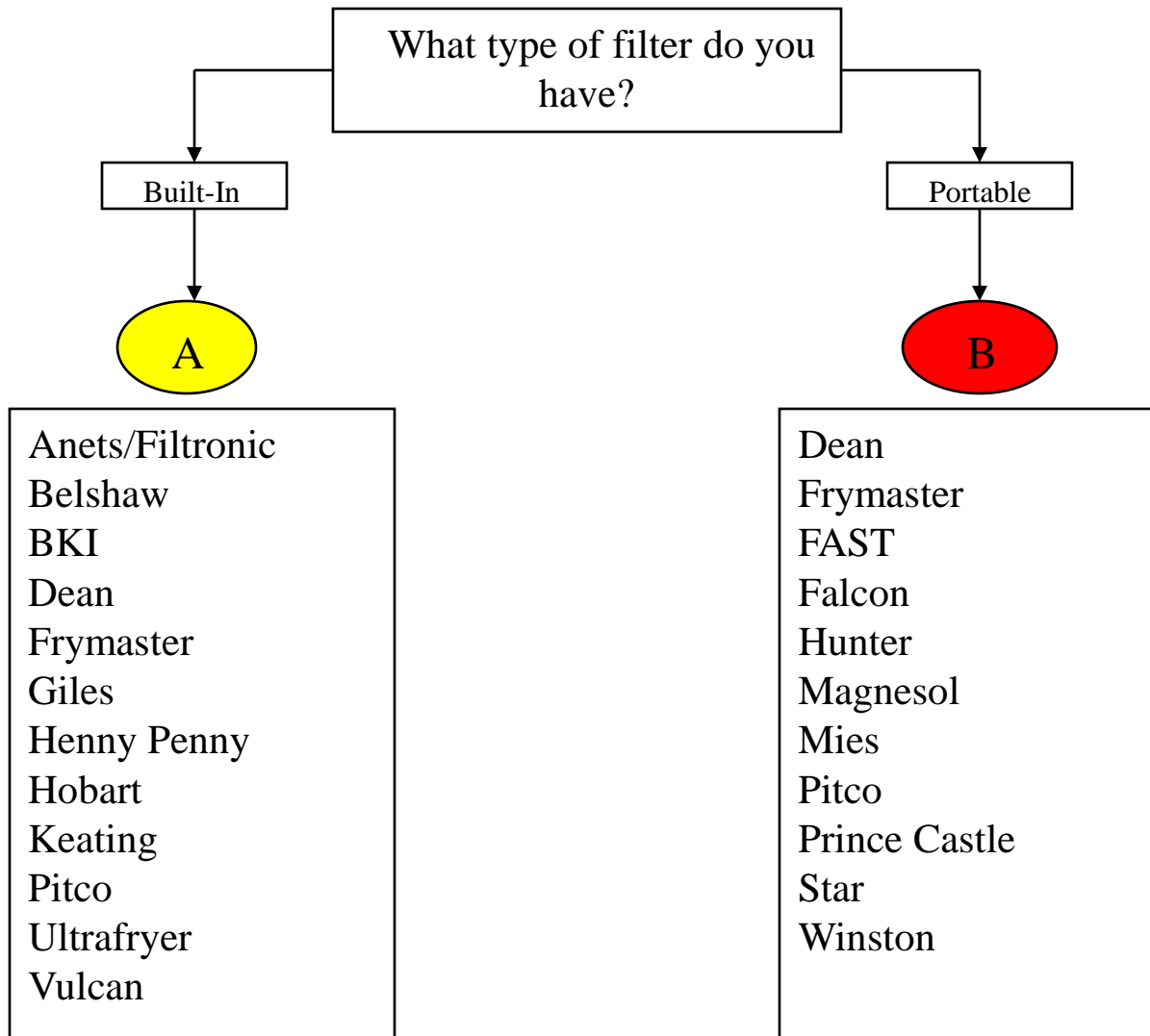
Pan with pump attached

Wheels to roll around

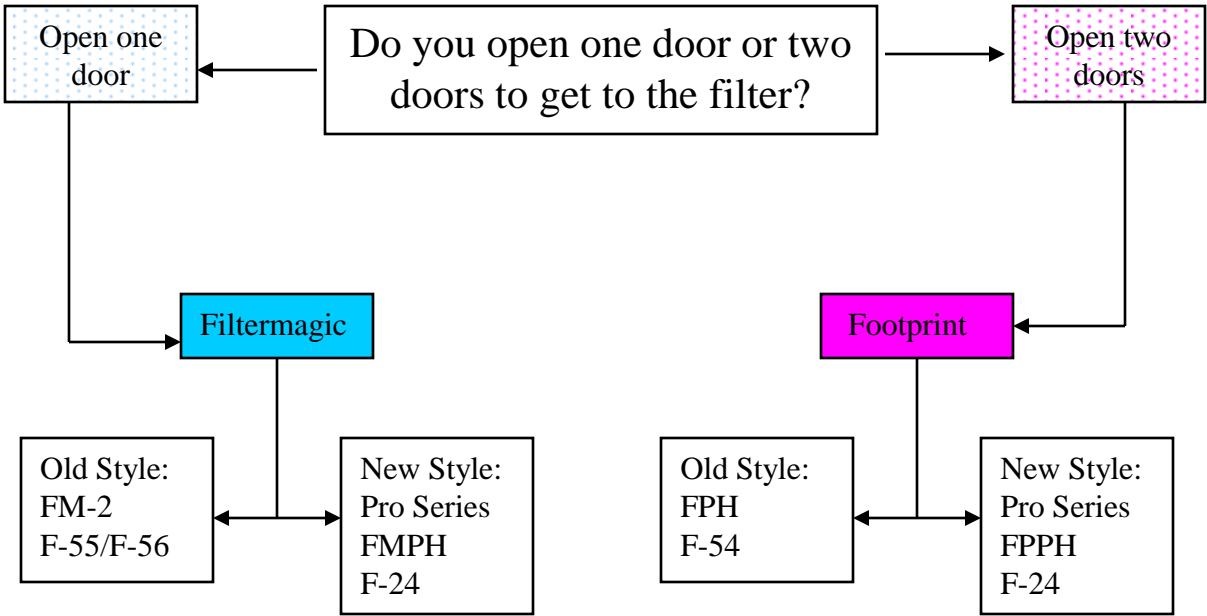
Stores in back room

Roll up to fryers

Equipment Identification Flow Chart



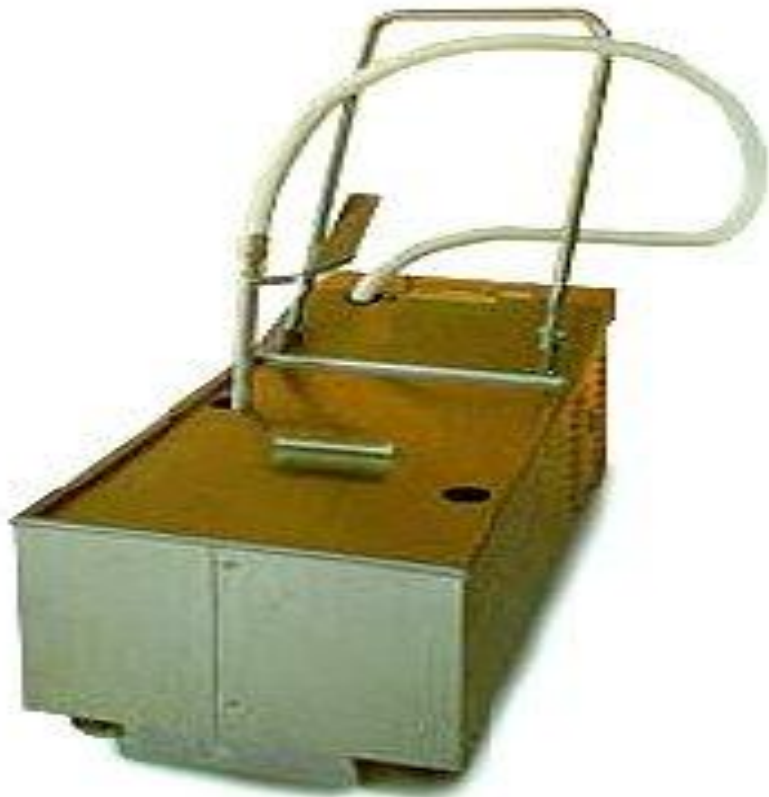
FRYMASTER Built-In Filter



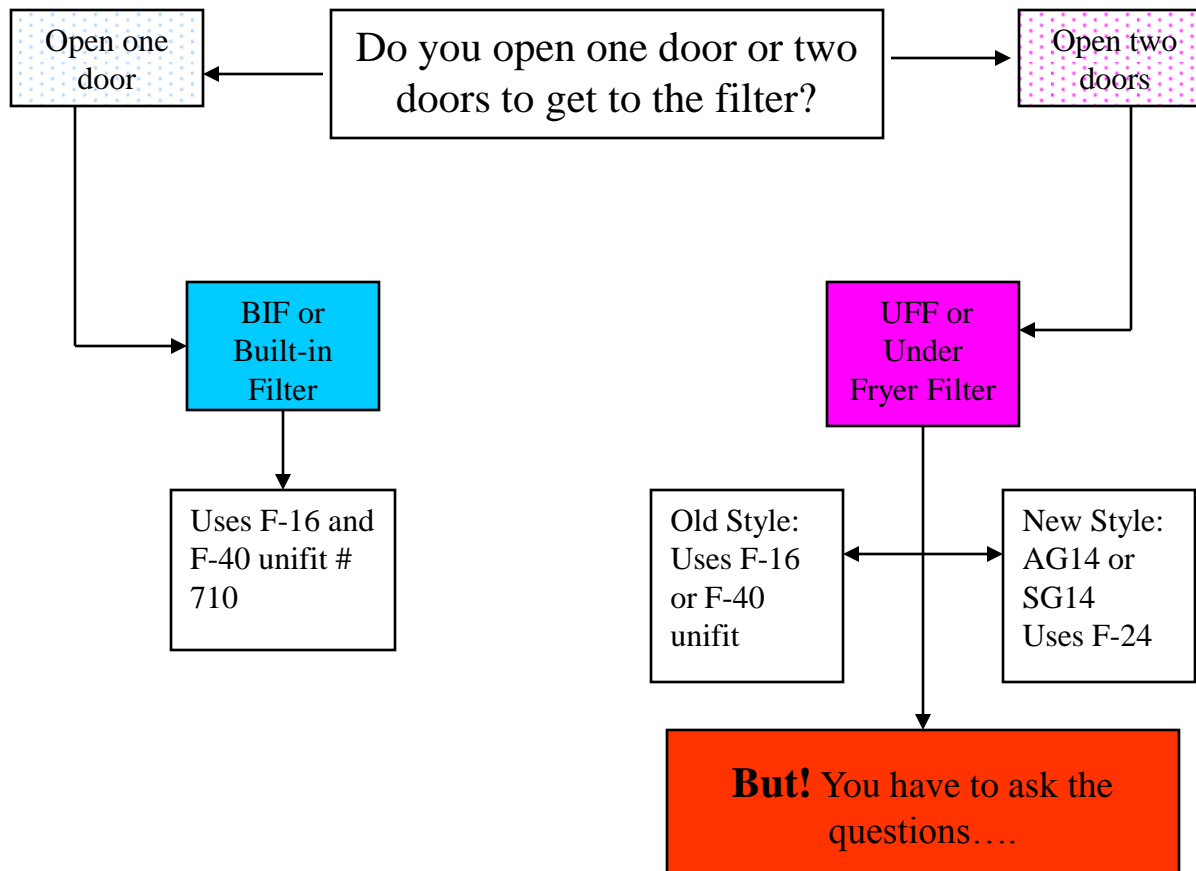
Frymaster/Dean



Frymaster/Dean Portable



PITCO Built-In Filters

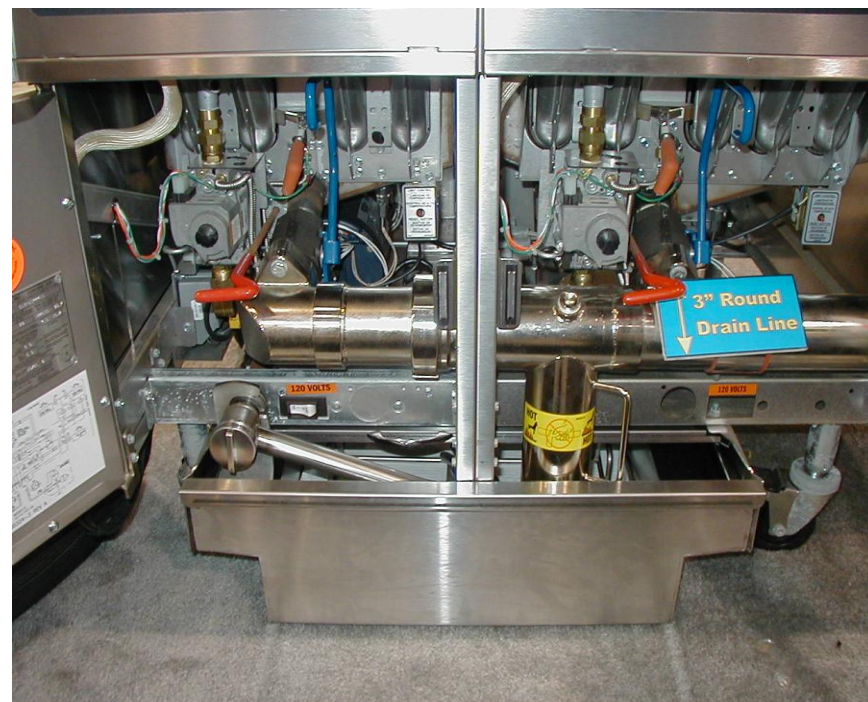


With Pitco you have to know...

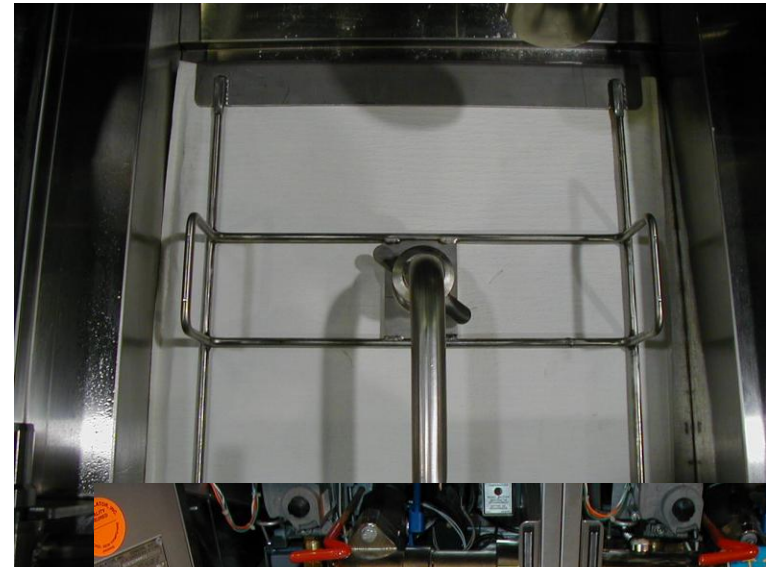
What type of Oil Pick-up System is used in this filter set up?

- Is there a pipe or tube attached to the filter media?
 - Does the pipe swing up and down onto the filter?
 - Is there a hold down ring for the filter media?
 - Is the filter a envelope type?
- *With Pitco this is the hardest part of the identification process!*

Pitco Built-In



Current Pitco Filters



Pitco Portable Filter



The rest of the field

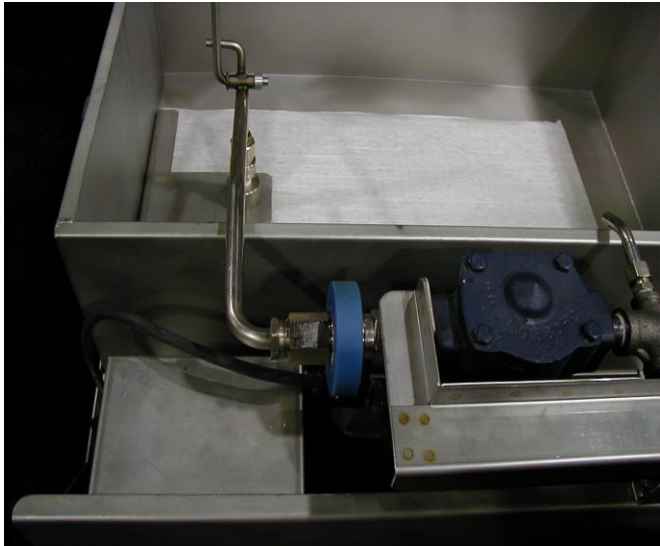
Beyond Frymaster and Pitco...

Listed in alphabetical order are the most common built-in and portable fryer filter systems you will see in the market. Also included is the CarbonPad set up for each filter.

- Anets Filtronic: Uses 702 adapter
- BK Industries: Uses the 728 adapter
- Dean MF90: Uses the F-38 (511) and F-60 (512) CarbonPads
- Dean Cascade: Uses usually the F-49 CarbonPad

The Rest of the field continued:

- Henny Penny: Uses 704 adapter
- Hunter Uses: 723 adapter
- Low Boy: Uses 707 adapter
- Magnum: Uses 740 adapter
- Ultrafryer: Uses 704 adapter
- Winston: Uses 703adapter



Anets Filtronic



Henny Penny

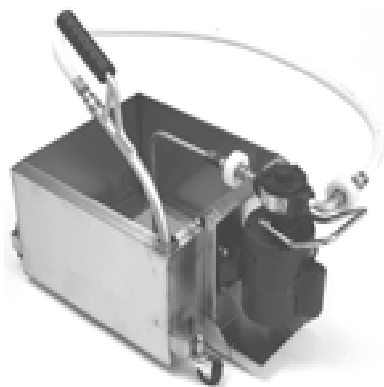
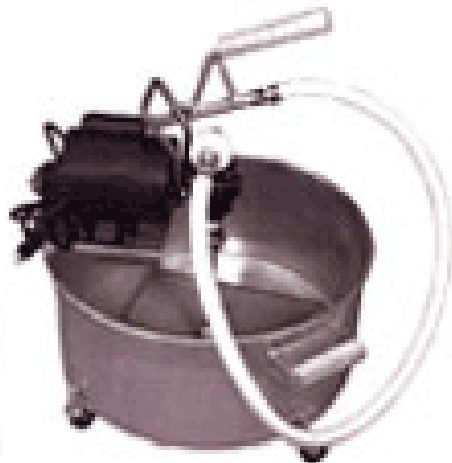


BKI



Falcon





Starter Kit details

Starter Kits Consist of:

- CarbonPads
- Adapter if needed
- Starter Kit Packet which includes:
 - Training DVD
 - Oil Tracking Chart
 - Oil Maintenance Tips Chart
 - Pad Scraper

Starter Kit Detail Summary

Each Unifit is made up of a base, handle, and in most cases a hose with fitting
In some cases instead of a hose, there may be a pipe or just a fitting.
Unifits come in three basic sizes - F-16, F-40, and F-45. An F-8 unifit is also available.

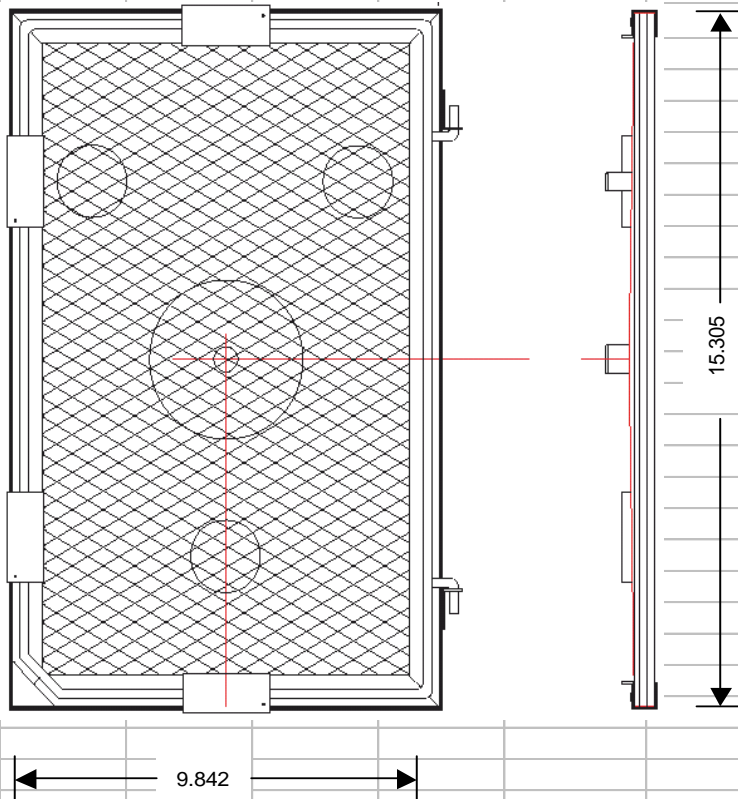
The CarbonPads below do not require a unifit padholder. The item number is the Starter Kit ID number

Standard Parts	ID No.	Unit each			CarbonPad	Item Number	
F-16 base/handle	1001-16H	1			F-38	511	
F-40 base	1001-40	1			F-60	512	
F-45 base	1001-45	1			F-44	513	
handle - 8"	1005	1			F-18A	519	
hose - 21"	1064	1			F-32	524	
Set screws	1037	2			F-42	529	
Starter Kit Packet		1			F-49	549	
Short Handle 7"	1063				F-24	550	
Ex-short 5.75"	1075				F-54	554	
Identification	Description	Part ID	Number			F-55	555
700	Base Assembly					F-56	556
	with starter kit packet						
701	Filtermagic 1						
	slip fitting	1021	1				
	O ring	1041	2				
	standard handle	1005					
702	Giles/Chesterfry/Anets						
	plug	1008	1				
	bushing	1007	1				
	standard handle	1005					
703	Winston Portable						
	winston fitting	1046	1				
	O ring	1040	1				
	coupler	1011	1				
	standard handle	1005					
704	BKI/Belshaw/Falcon/Farwest/H-P/Prince Castle						
	dairy fitting	1034	1				
	90 degree elbow	1006	1				
	standard handle	1005					
705	Dean						
	nipple	1017	1				
	fitting	1010	1				
	standard handle	1005					
706	Fast/Imperial BIF						
	bushing	1007	1				
	fitting	1013	1				
	standard handle	1005					

707	Pitco Portable/Low Boy/Permafil		
	fitting	1015	1
	standard handle	1005	
708	Pitco Spacefighter/Imperial Portable		
	fitting	1012	1
	standard handle	1005	
710	Pitco/Star		
	fitting	1015	1
	w eatherhead	1055	1
	standard handle	1005	
711	Pitco Spacesaver/Turbofry		
	black acetyl handle	1057	1
	tubing	1061	1
	sleeve	1082	1
	nut	1083	1
	adapter fitting	1086	1
	short handle	1063	
713	Pitco Solstice		
	solstice fitting	1036	1
	xtra short handle	1075	
723	Hunter		
	reducer swivel	1053	1
	bushing	1007	1
	Hunter Fitting	1046	1
	standard handle	1005	
725	Dean MF 90 Models 18 &20		
	coupler	1014	1
	nipple	1017	1
	standard handle	1005	
728	New BKI		
	tube and collar	1076	1
	standard handle	1005	
730	Hunter Mini Max		
	fitting	1080	1
	fitting	1081	1
	standard handle	1005	
740	Magnum (no hose)		
	pipe	1093	1
	fitting	1089	1
	standard handle	1005	
750	LS-1		
	fitting	1012	1
	safety donut	1012A	1
	standard handle	1005	

STARTER KIT UNIFIT ASSEMBLY GUIDE

F-16 Standard Pad-Holder Adapter



Internal Dimensions – 15.125 x 9.685 inches

External Dimensions – 15.305 x 9.842 inches

Part Number	COMPLETE ASSEMBLY*
701-16	Frymaster- Filtermagic I
702-16	Giles WOG-MP Anets Filtronic / FilterMate
703-16	Winston Portables
704-16	Belshaw BKI Industries-FKS (old) Falcon Portable Farwest / Ultrafryer Henny Penny Prince Castle - Rectangle
706-16	Fast Non-Reversible Imperial BIF
707-16	Magnesol Lowboy Permafil Pitco Portables
708-16	Imperial Portable Pitco Spacefighter / UFM
710-16	Pitco BIF Star
711-16	Pitco Spacesaver UFM Pitco Turbofry 2000
713-16	Pitco 'Solstice'
723-16	Hunter Filtrator
728-16	BKI Industries (new style FKS)
730-16	Hunter Mini Max
740-16	Magnesol Magnum
750-16	Filtercorp LS-1 Portable

***COMPLETE ORDERS INCLUDE PAD-HOLDER BASE, HOSE, FITTING AND SAFETY HANDLE. FOR FILTER EQUIPMENT NOT LISTED ON THIS PAGE, CONTACT FILTERCORP AT (800) 473-4526.**